

# PRINT2DAY FOLDERS - DIY Digital

## WHAT WE NEED FROM YOU

We prefer a Hi-Res pdf (print quality) or an eps file

All images need to be 300dpi

Keep all text at least 5mm from the score / trim edge

Convert text to outlines - if you are not able to do this you will need to supply the font(s) used

Prefix your file name with your order ref. number

We prefer images and colour to be CMYK but if you are using Word or Publisher please read the 'Using Word or Publisher' fact sheet first

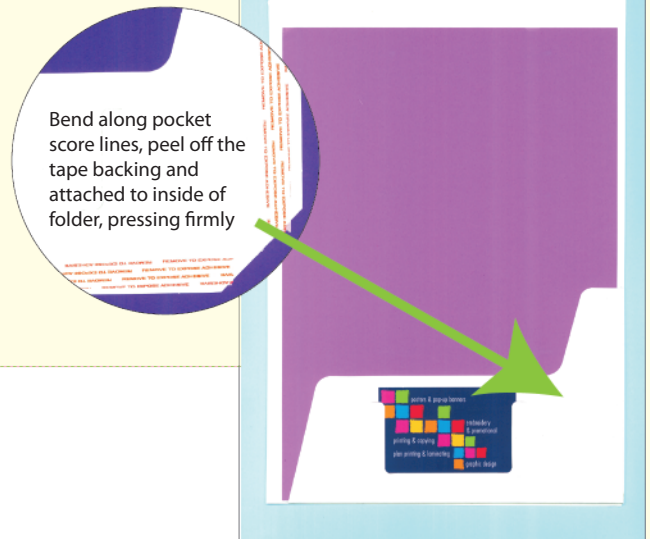
**These folders are not suitable for large areas of solid colour or blocks of gradient shading - don't allow images/colour to cross the centre score line to avoid quality issues**

**Finished size 324 x 454mm**

this size does not allow for 'bleed'

**Start size 324 x 454mm  
Finished size 317 x 442mm**

this size allows for 3mm 'bleed' on the 2 short edges and the bottom long edge only (as shown by the green dotted line below)



if you want the colour to 'bleed' off the edge of the page we have to make the folder smaller by trimming into the colour (as indicated by the dotted line - everything outside the line is discarded)

# PRINT2DAY - Presentation folders

©PRINT2DAY PTY LTD FEB 2012

## WHAT WE NEED FROM YOU

We prefer a Hi-Res pdf (print quality)

All colours must be CMYK

All images need to be converted to cmyk before embedding and be 300dpi

Allow 5mm bleed

Use two layers - one for the knife line and one for your artwork - the knife layer will be on top and needs to be visible when you open the pdf

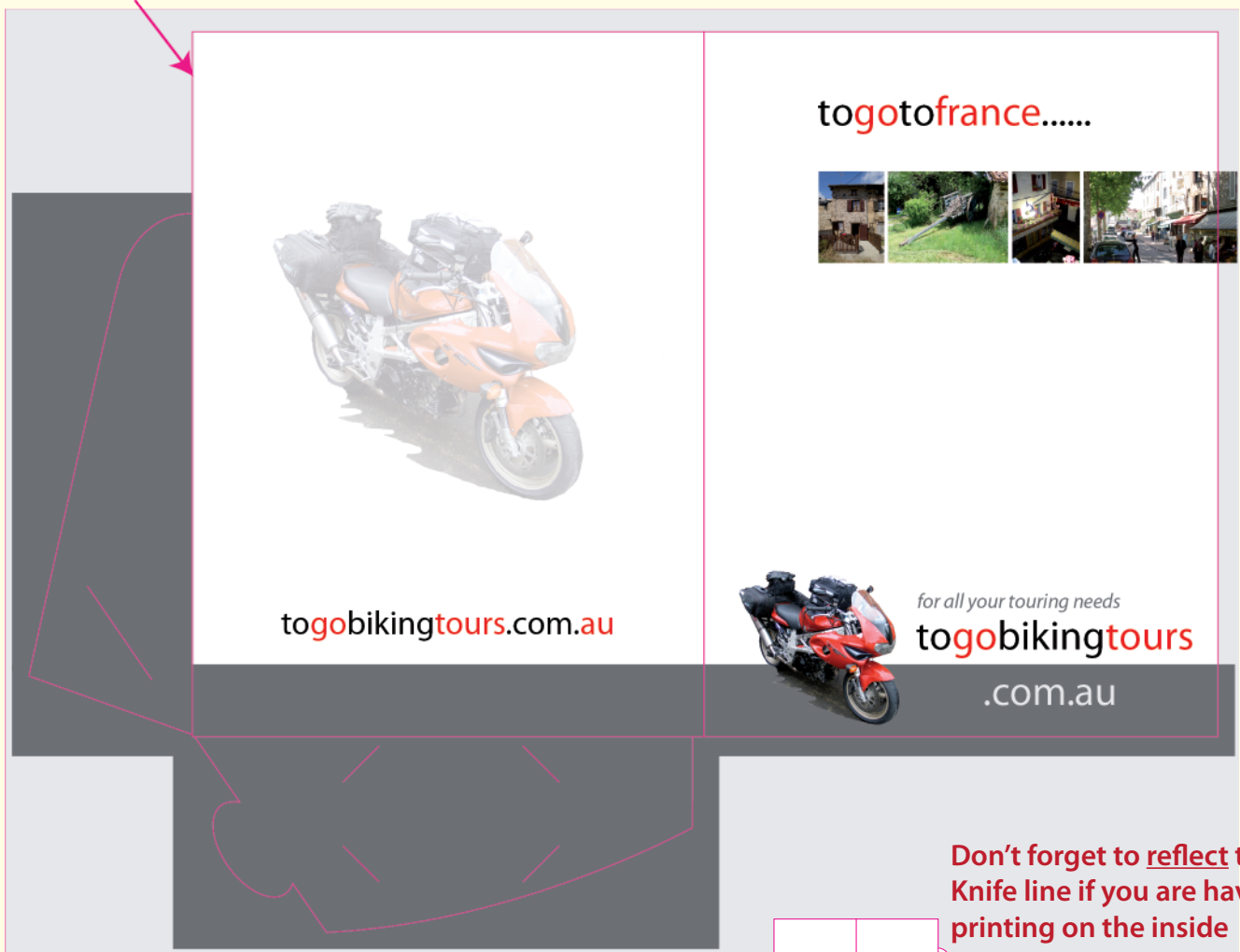
Keep all text at least 5mm from the score / trim edge

Convert text to outlines - if you are not able to do this you will need to supply the font(s) used

Prefix your file name with your order ref. number

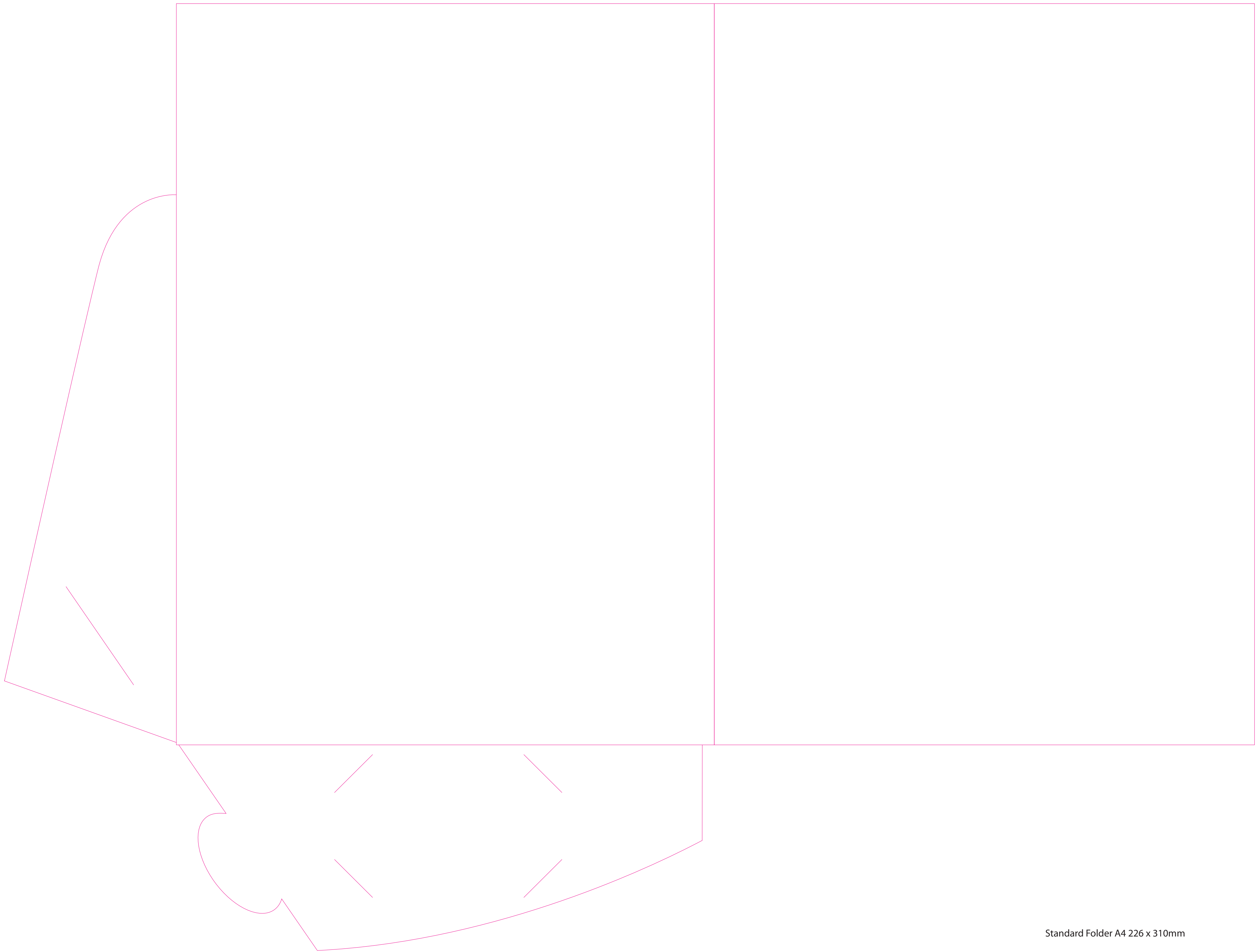
Knife line

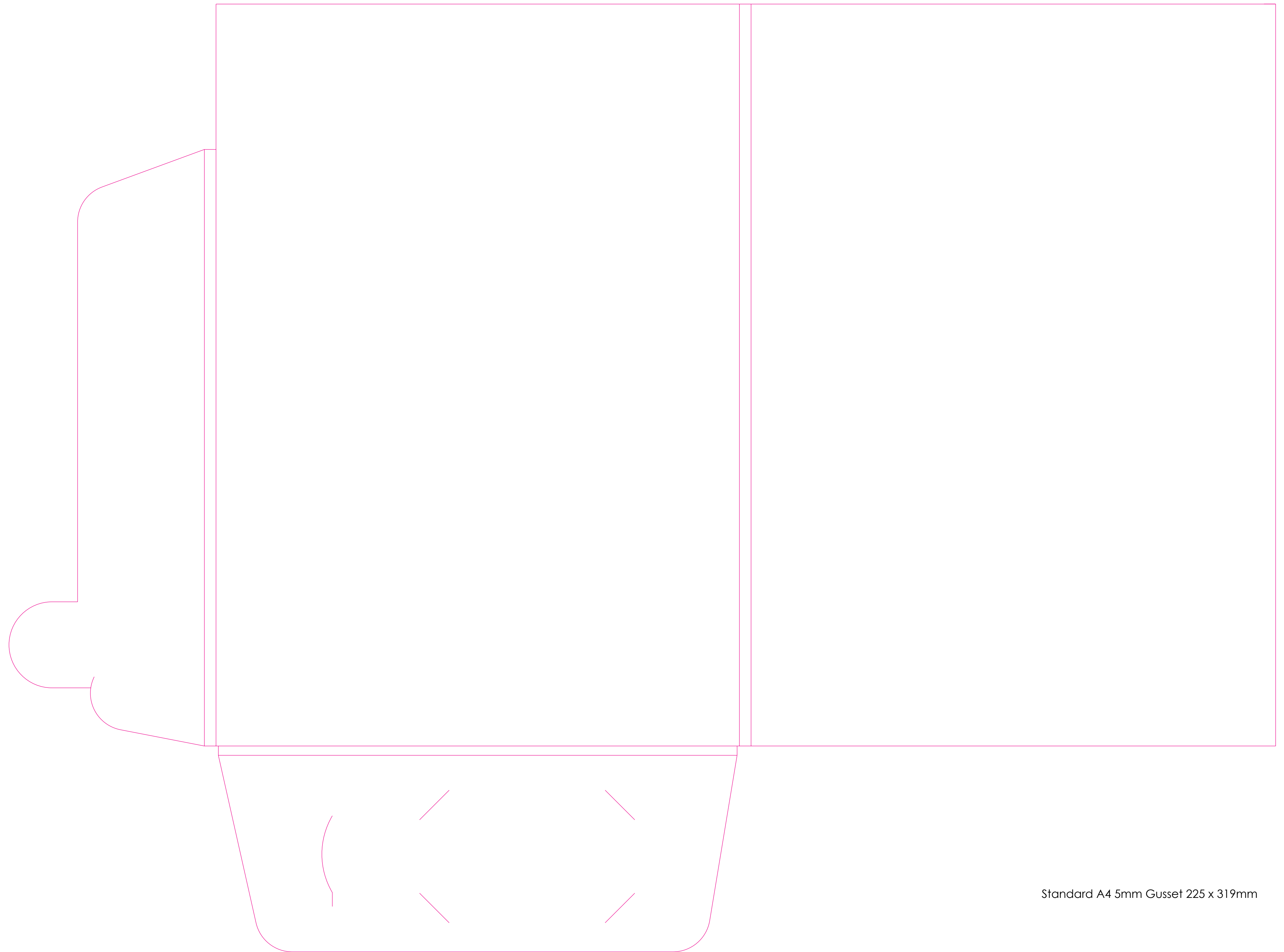
document set-up @ 542.58 x 417.58mm (shown as grey area)



Don't forget to reflect the Knife line if you are having printing on the inside







Standard A4 5mm Gusset 225 x 319mm